

oxhoo

# Utility Tool for POS Instruction

Rev.1.0



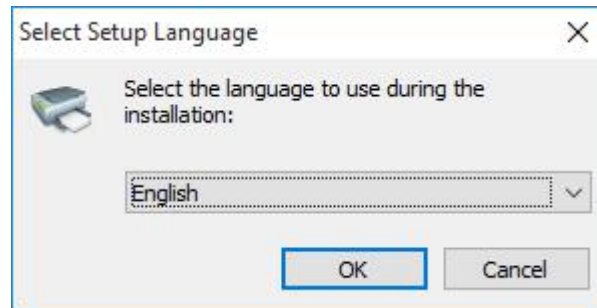
Utility Tool is applicable to the following operating system:

- Microsoft Windows 10 (32 bit/64 bit)
- Microsoft Windows 8 (32 bit/64 bit)
- Microsoft Windows 7 SPI (32 bit/64 bit)
- Microsoft Windows Vista SP2 (32 bit/64 bit)
- Microsoft Windows XP Professional SP3 (32 bit)
- Microsoft Windows Server 2012(64 bit)
- Microsoft Windows Server 2008 R2
- Microsoft Windows Server 2008 SP2(32 bit/64 bit)
- Microsoft Windows Server 2003 R2 SP2(32 bit/64 bit)

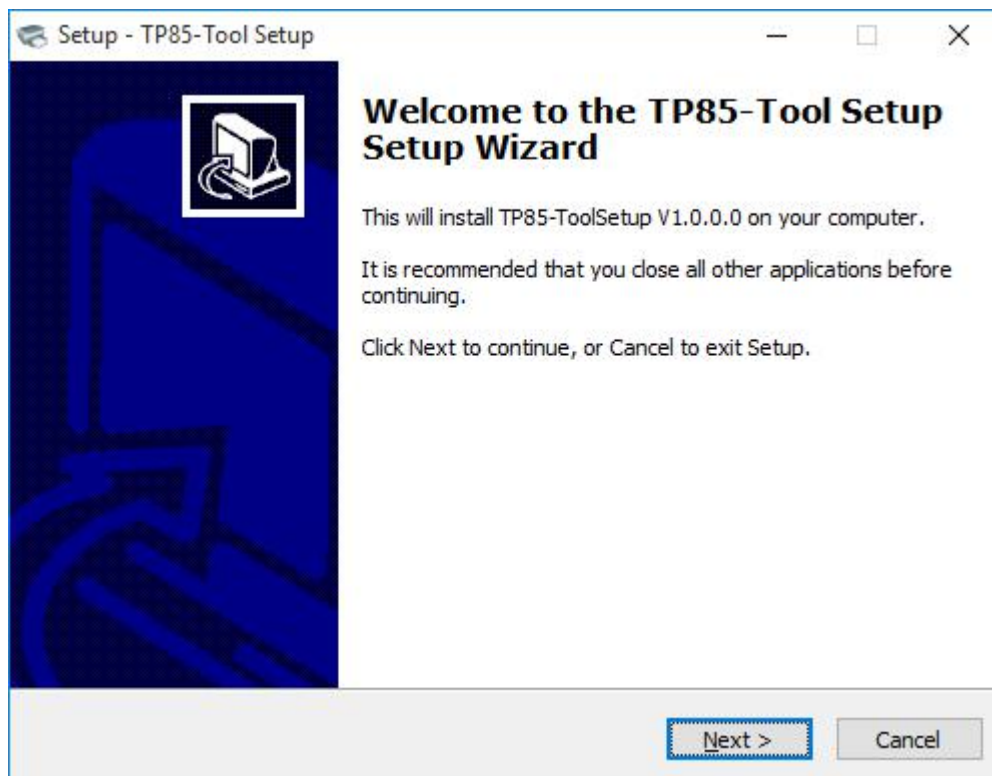
<b>Driver version</b>	<b>V 1.0.0.0</b>
-----------------------	------------------

# 1. Installation of Utility Tool

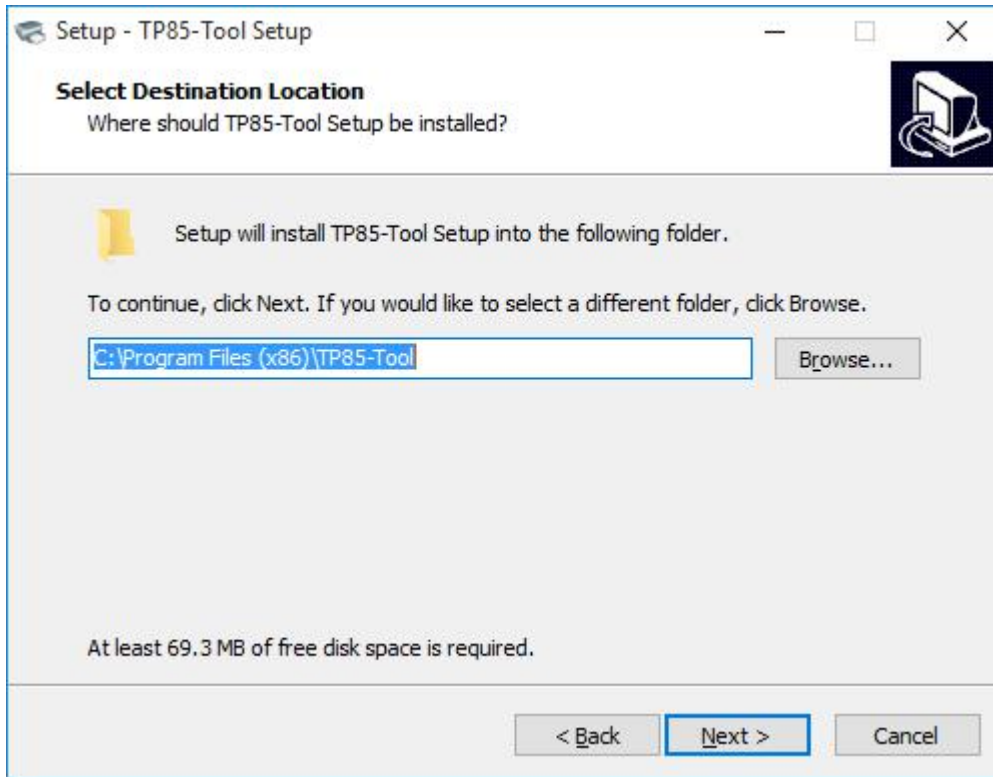
1. Open the installation package.
2. Choose "English" and click "OK".



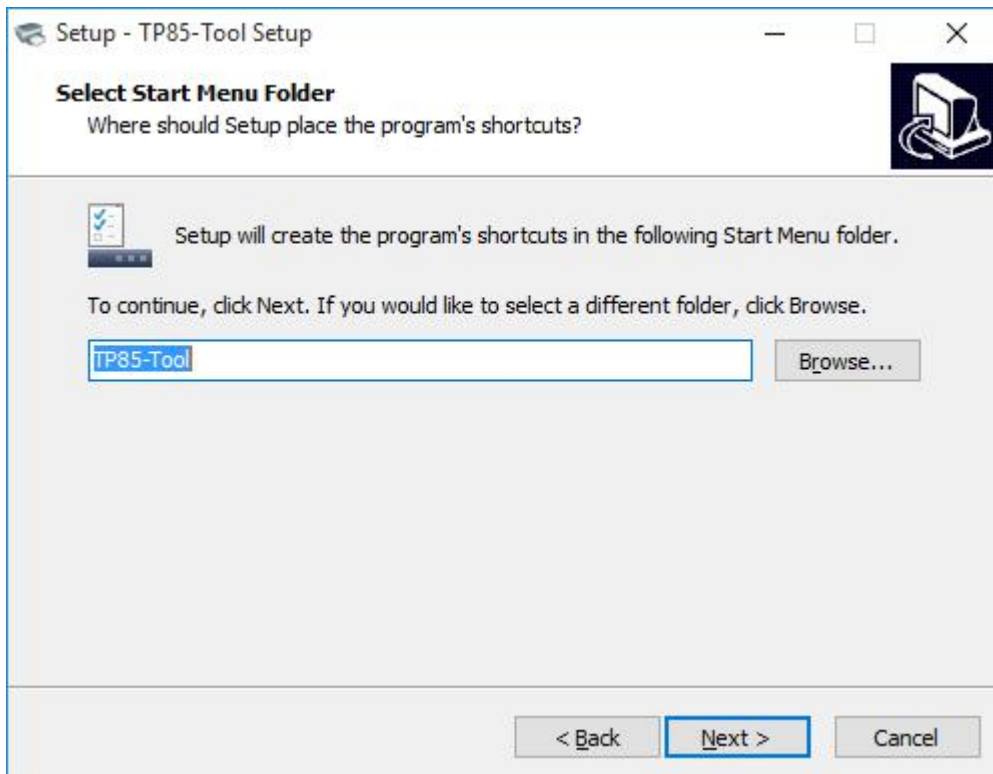
3. Click "Next".



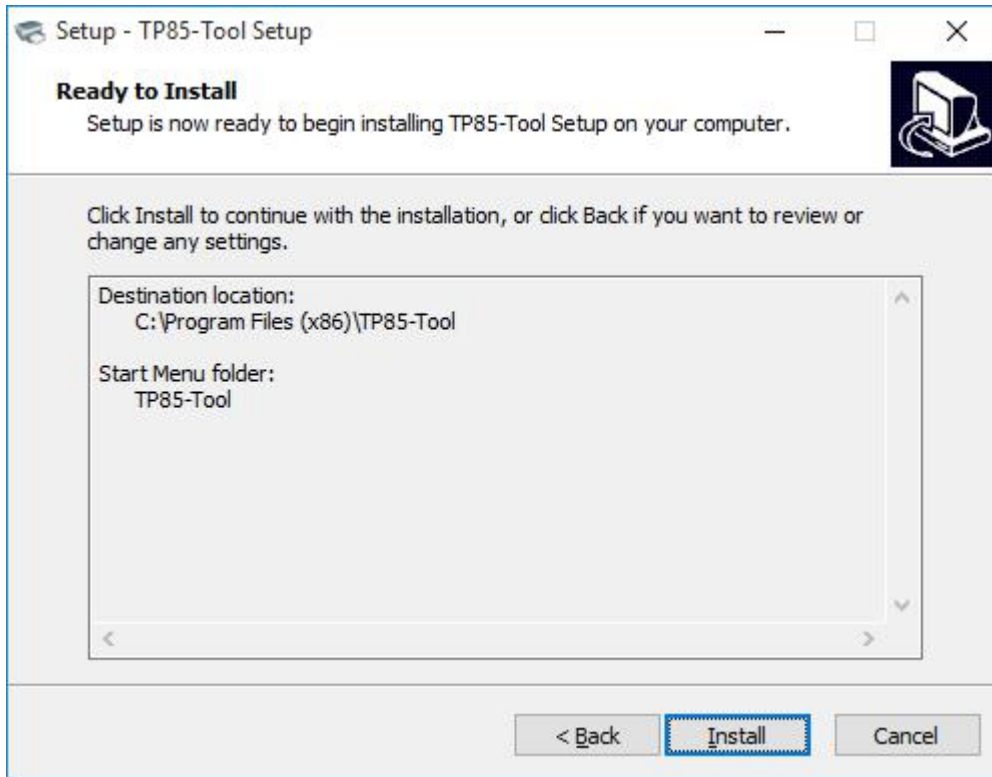
4. Select destination location to install the Utility Tool. Click “Next”.



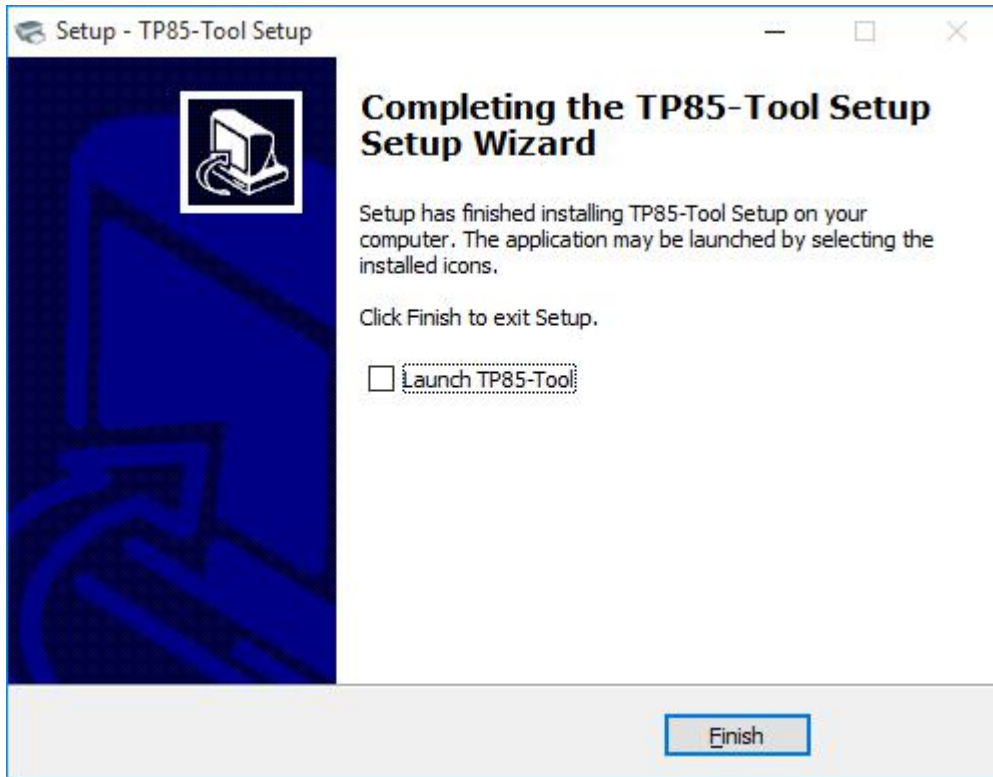
5. Select start menu folder. Click “Next”.




6. Click "Install".



7. Click "Finish". Utility Tool installed successfully.

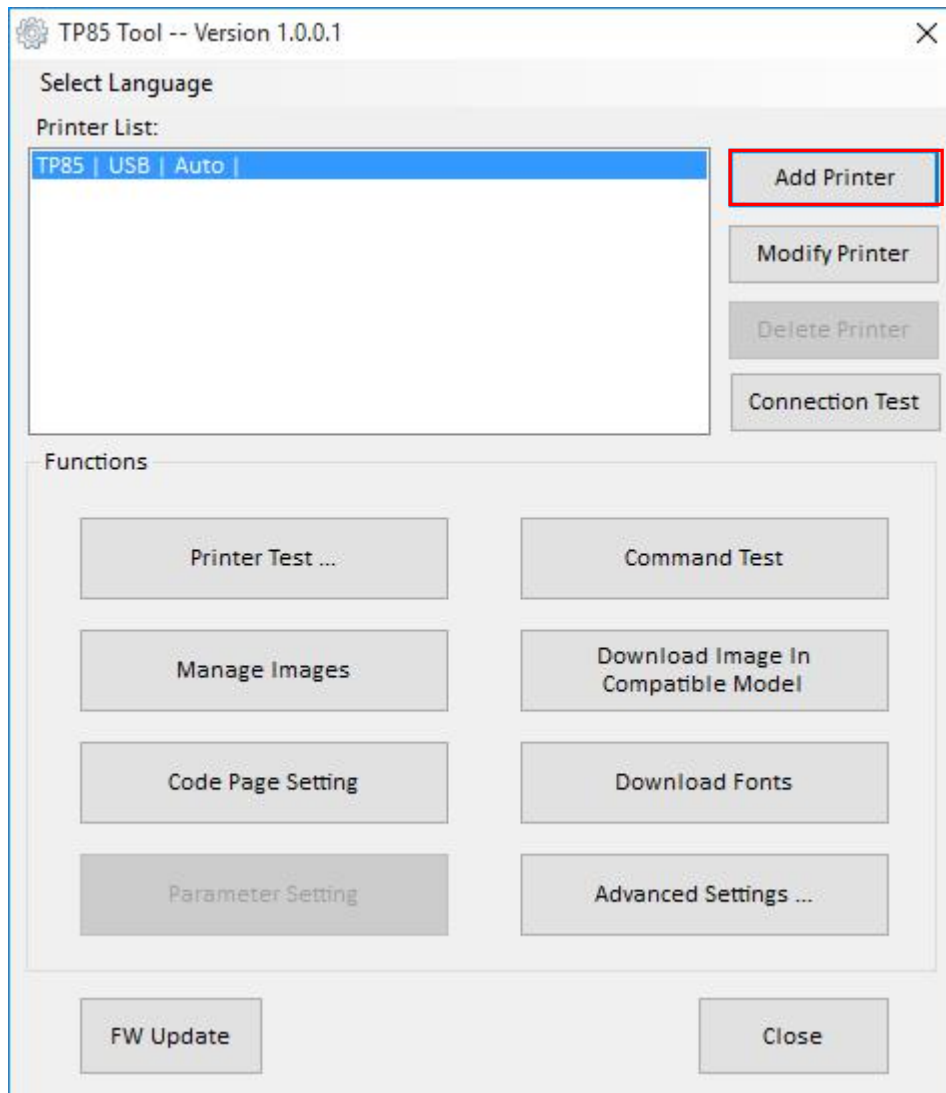


## 2.Using Utility Tool

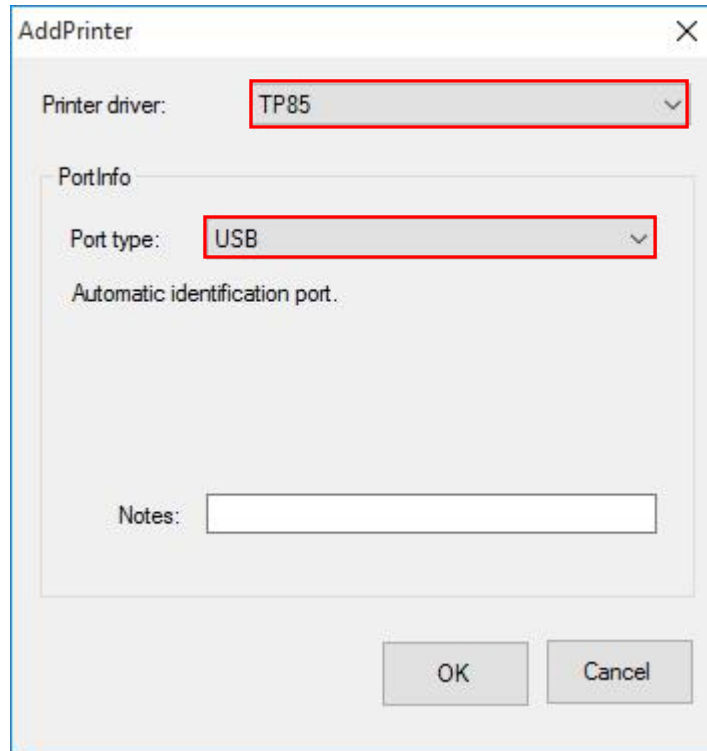
 Warning: In different operating system, screen has slight difference. Please operate it according to the tips. Take TP85 (Windows 10) for example.

- **Add printer**

1.Click "Add Printer".



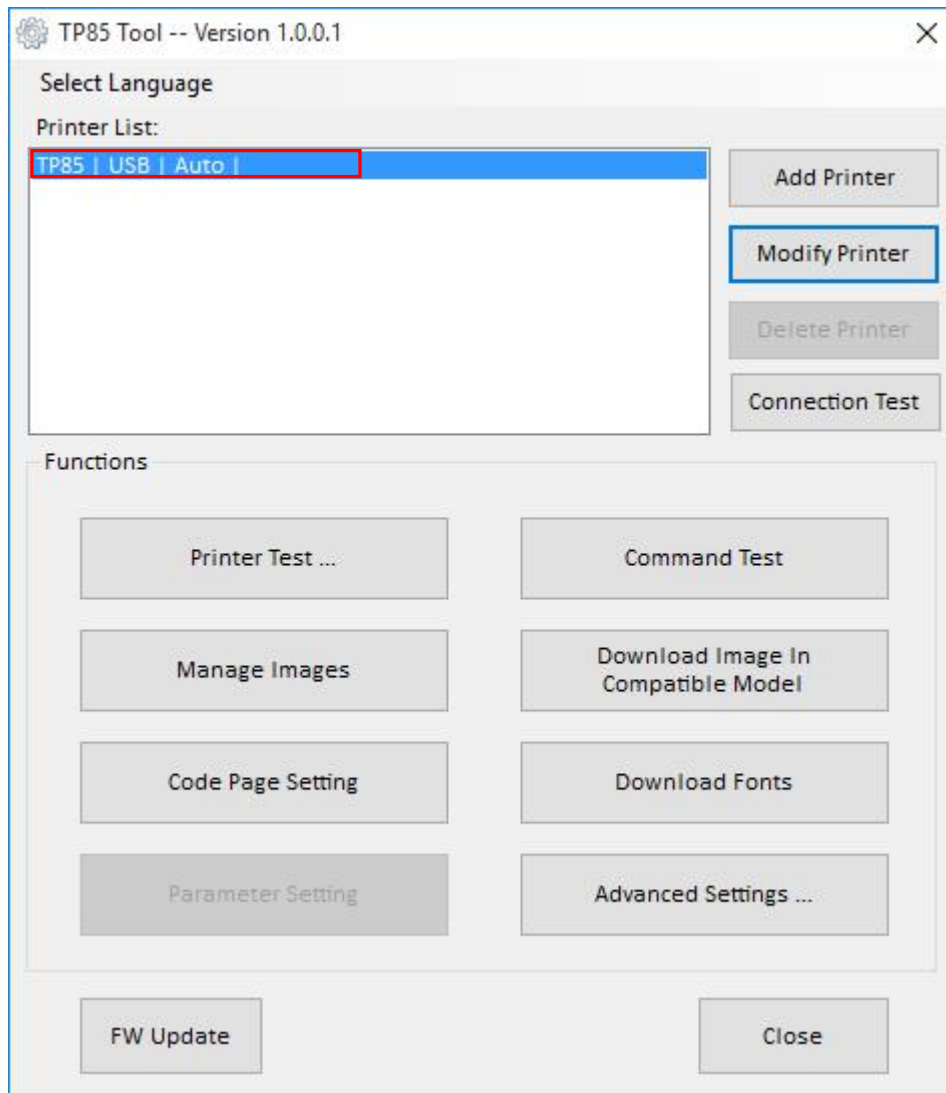
2. Choose the right printer type and port. Then click "OK". (Take TP85 for example.)



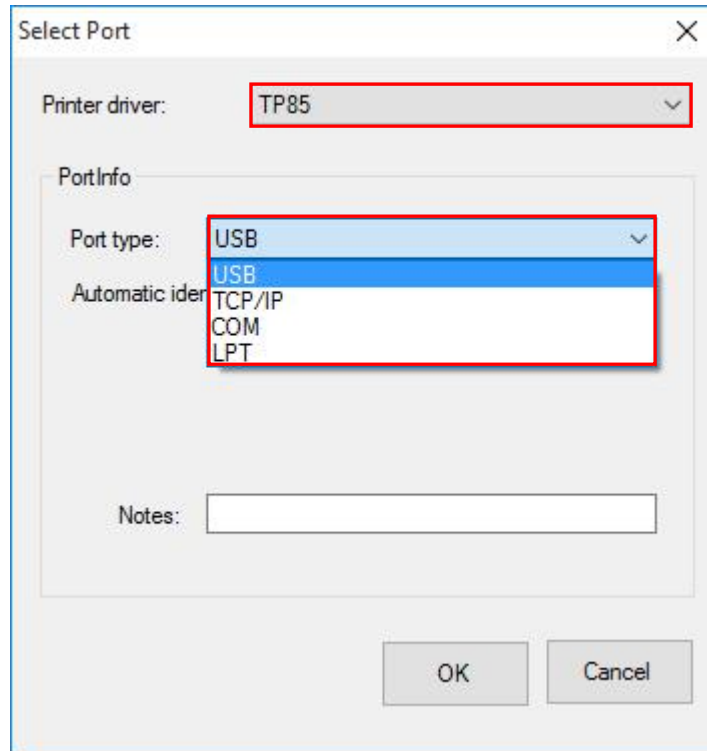


## ● Modify printer

1. Choose the printer you want to modify in the list. Click “Modify Printer”.



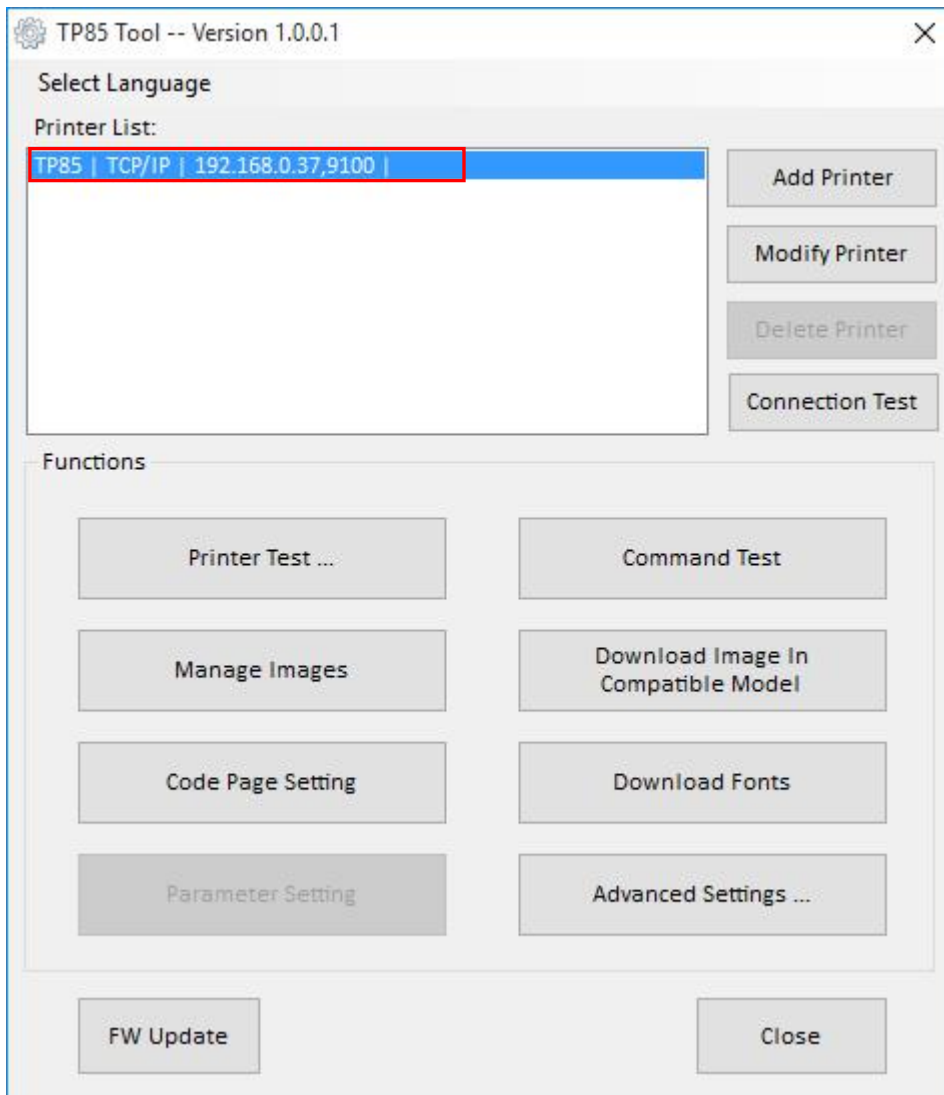
2. Choose the new printer and new port. Then click "OK".



3. The new printer added successfully.

● **Delete printer**

1. Choose the printer you want to delete in the list and click “Delete Printer”.



Note: If there are more than two printers in the list, the button is available.

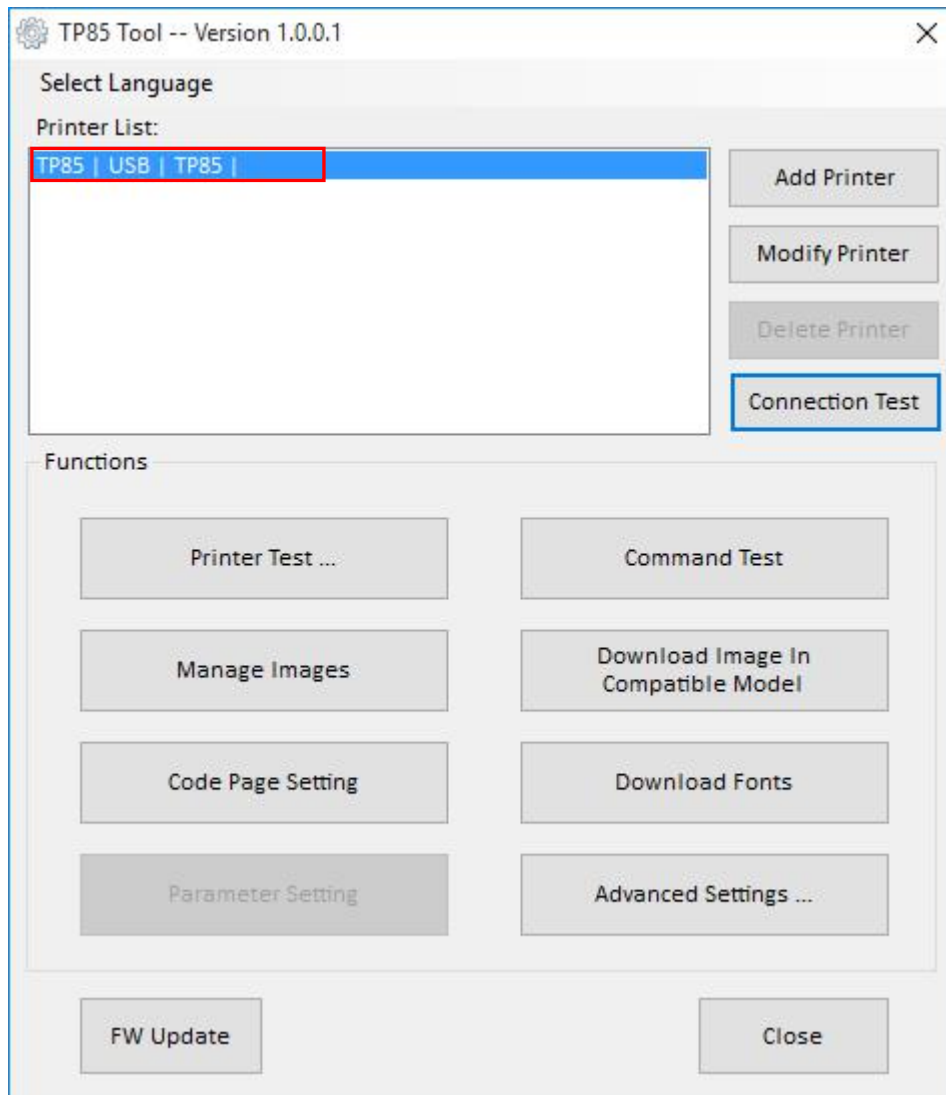
2. Click “Yes”, then the printer is deleted.



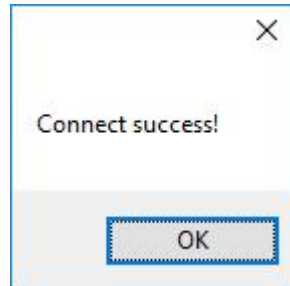
● **Connection Test**

*Make sure printer is connected with computer and power on.*

1. Choose the printer. Click “Connection Test”.



2.If the connection is successful, it will appear the following window. If the connection is unsuccessful, please connect the printer with computer.

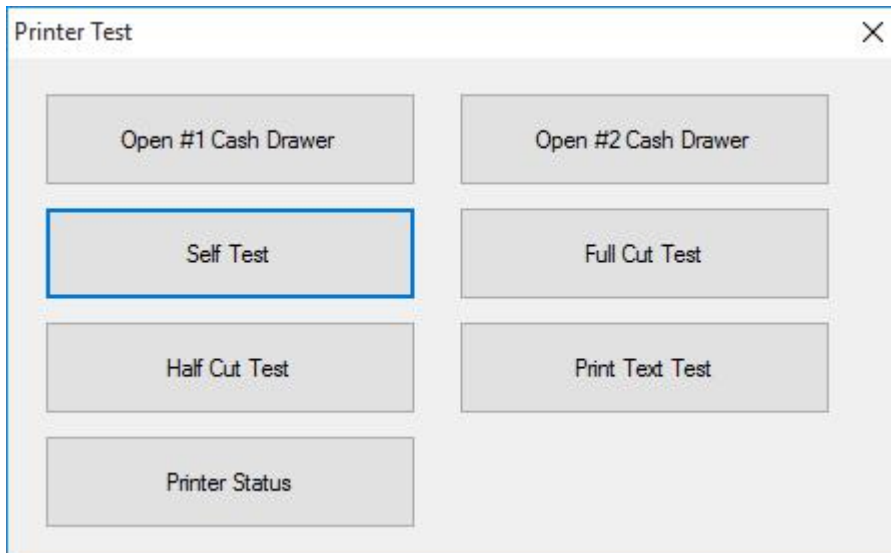


Note:

1. Make sure printer is connected with computer and power on.
2. Make sure printer is loaded paper.
3. Before using the following function, carry out the "Connection Test" first.

● **Printer Test**

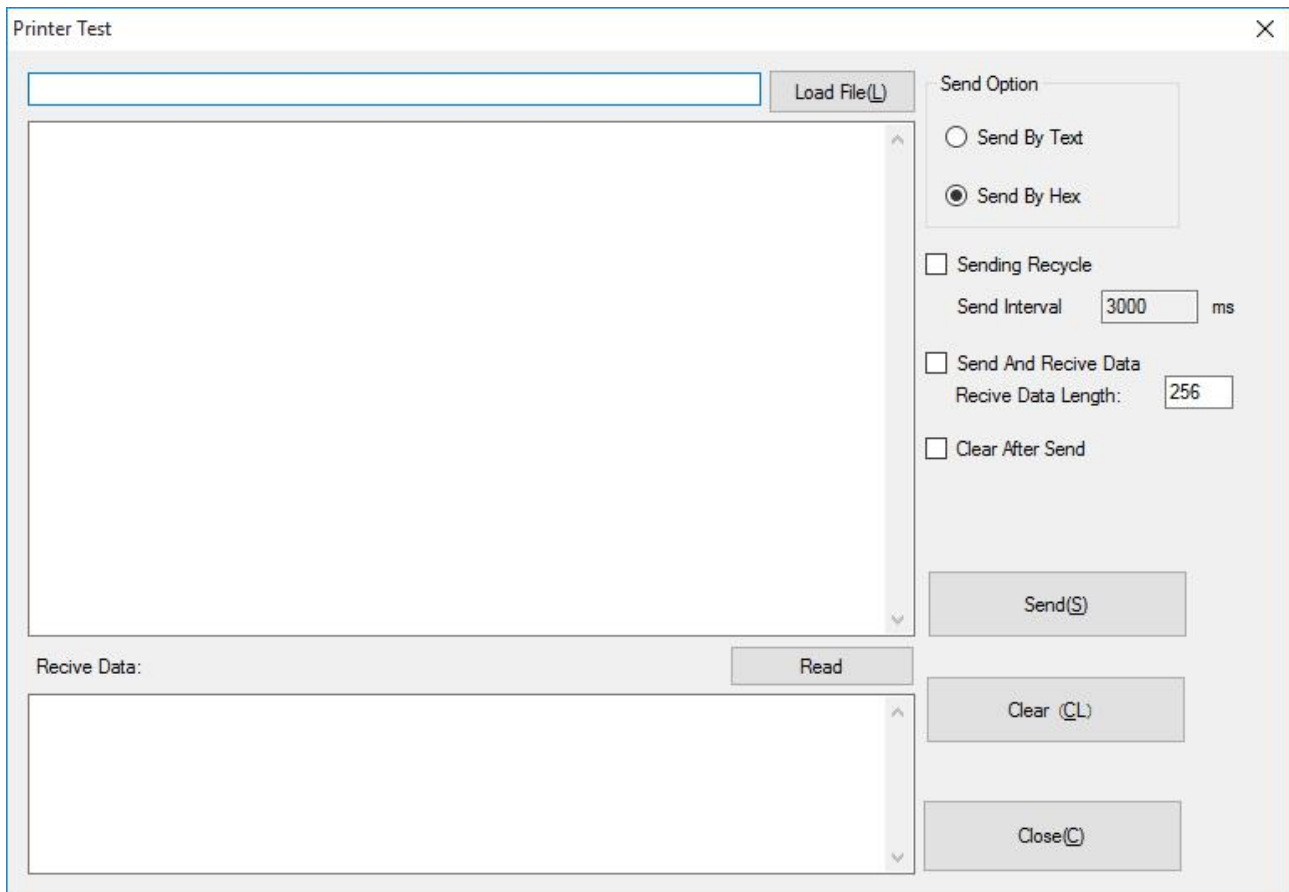
Printer Test contains the below items. Click the button and printer will execute the appropriate action.



● **Command Test**

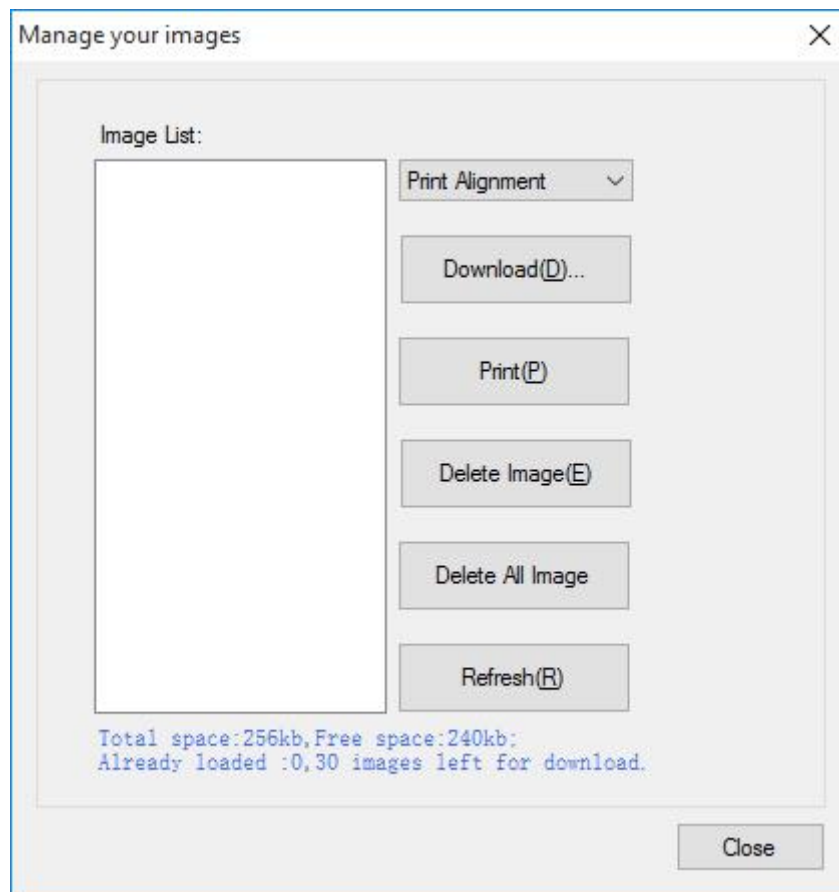
In Command Test, you can send commands to printer. Choose the Text or Hex data.

Choose a file from the existing files or input the command in the input box.



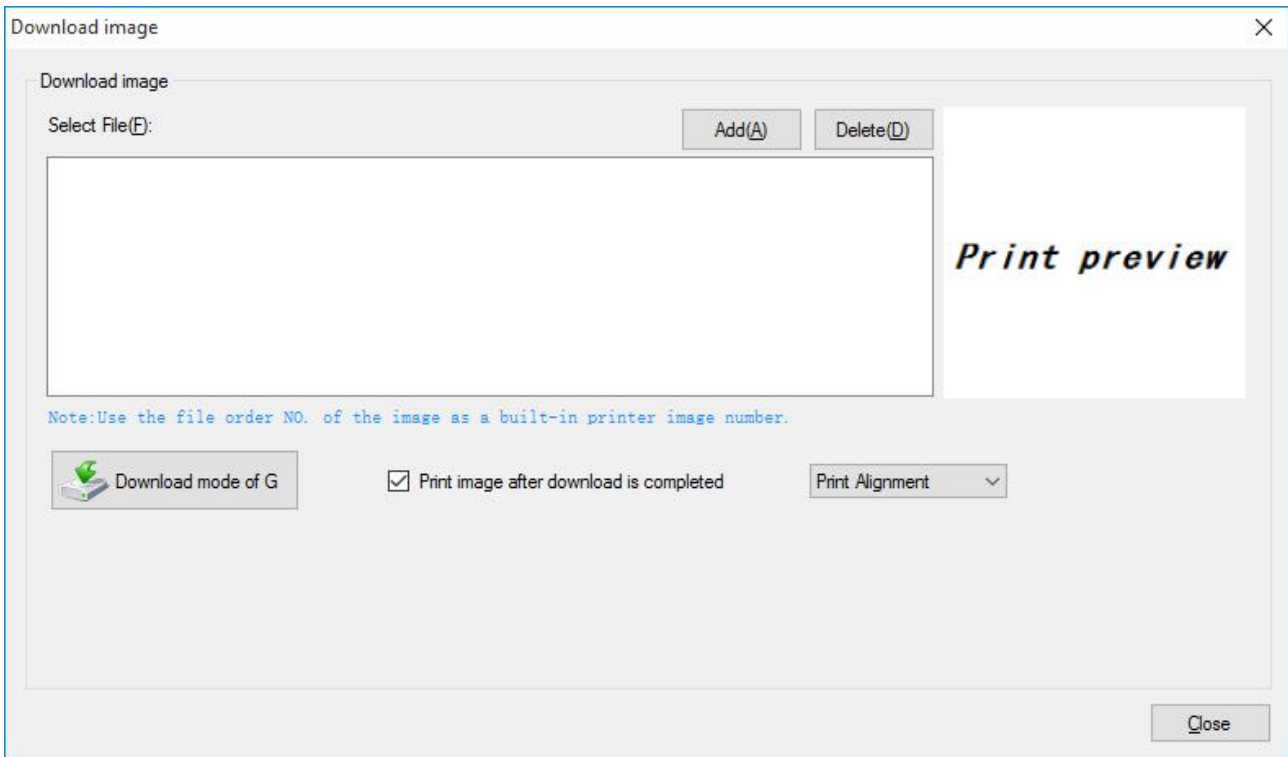
## ● Manage Images

Choose a image in image list. Click “Print” to print it or click “Delete Image”to delete it.





Click "Download" to download a new image into the printer.



*Note: The total memory is 256K. The each bitmap should be less than 40K.*

● **Download Image In Compatible Model**

Download image in compatible model which uses old command.

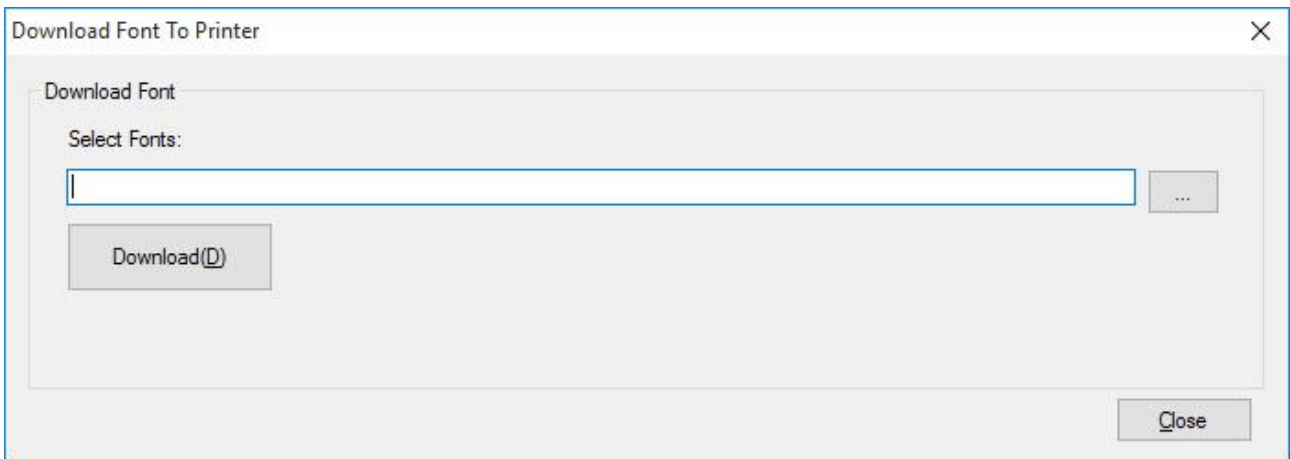
● **Code Page Setting**

Choose the code table from the drop-down menu and click "Setting".



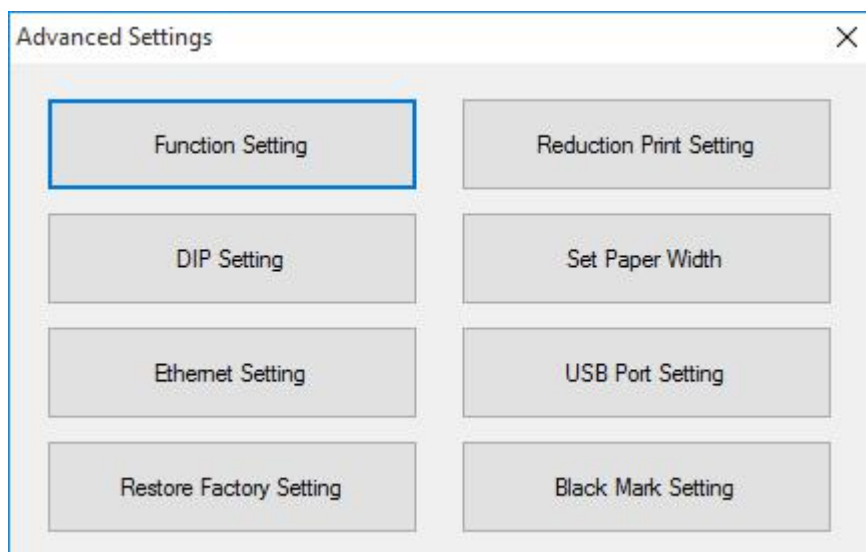
● **Download Fonts**

Choose the font from existing files and click “Download”. If you checked “Print Sample Text After Download”, the printer will print the sample text after downloading the font.



● **Advanced Settings**

Advances Settings contains below items. Click the button and printer will execute the appropriate action. *The change will take into effect after restarting the printer.*



◆ **Function Setting**

Choose the item and click “Setting(S)”.

Function Settings

Cutted Sounding

Disable

Use printer buzzer

Use printer buzzer and external buzzer

Printer Buzzer

Beep times:  (1-255)

Beeping time:  (1-255) (100ms)

Beeping interval:  (1-255) (100ms)

External Buzzer

Sound Times:  (1-63)

Sound Value

0  1  2  3

Setting(S)

Boot Model

Chinese Model(Z) English Model(U)

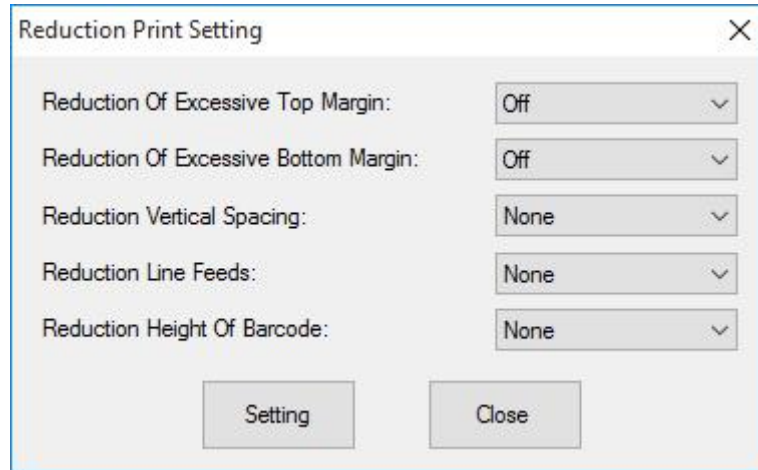
Paper Near-End Sensor Status

Enable Disable

Close(C)

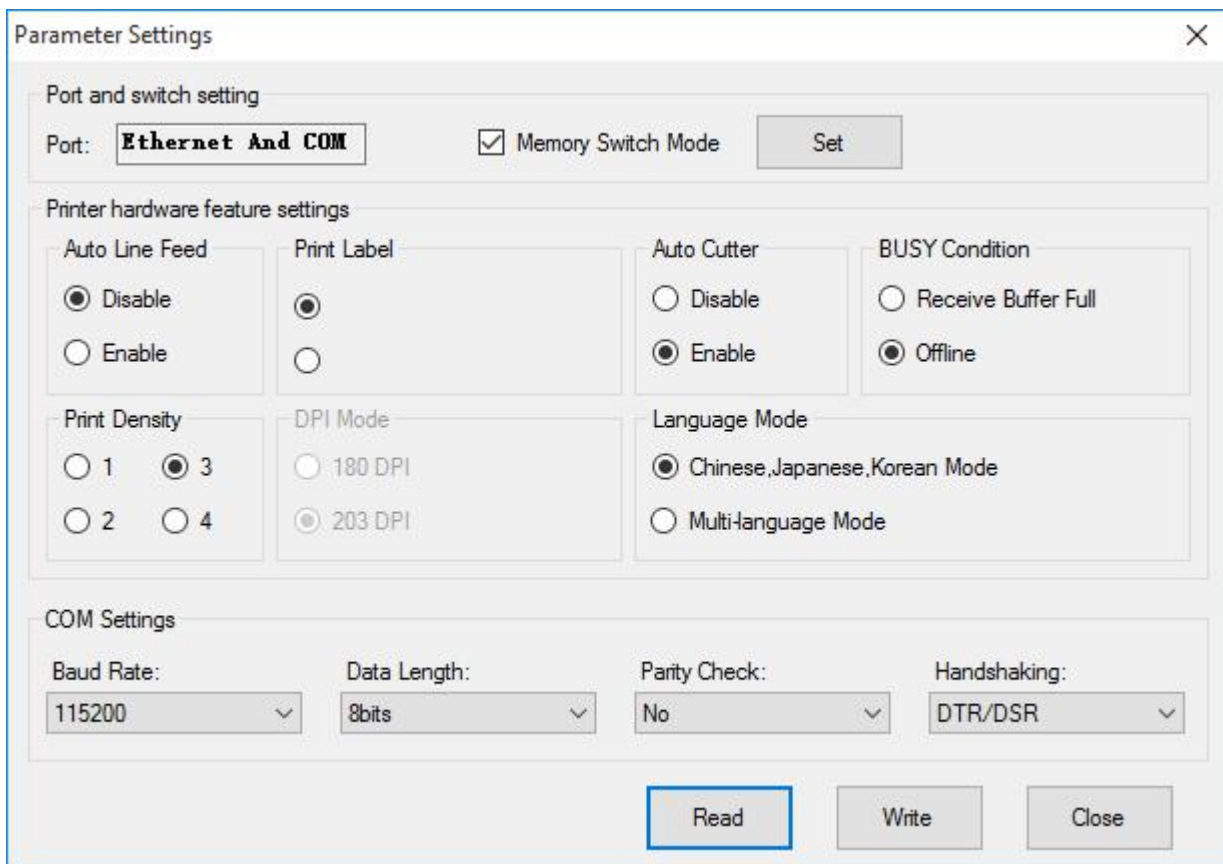
◆ **Reduction Print Setting**

Choose the item and click “Setting”.



◆ **DIP Setting**

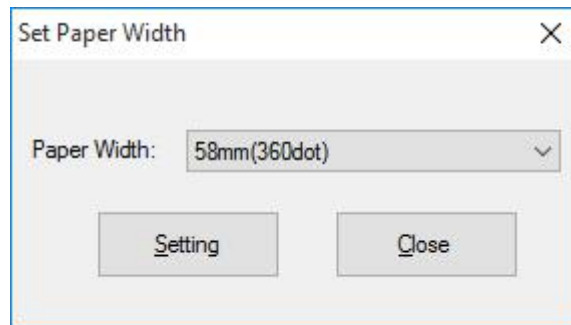
Choose the item and click “Set”.



*Note: When DIP setting is set in soft, the DIP switch in the bottom of printer is disable.*

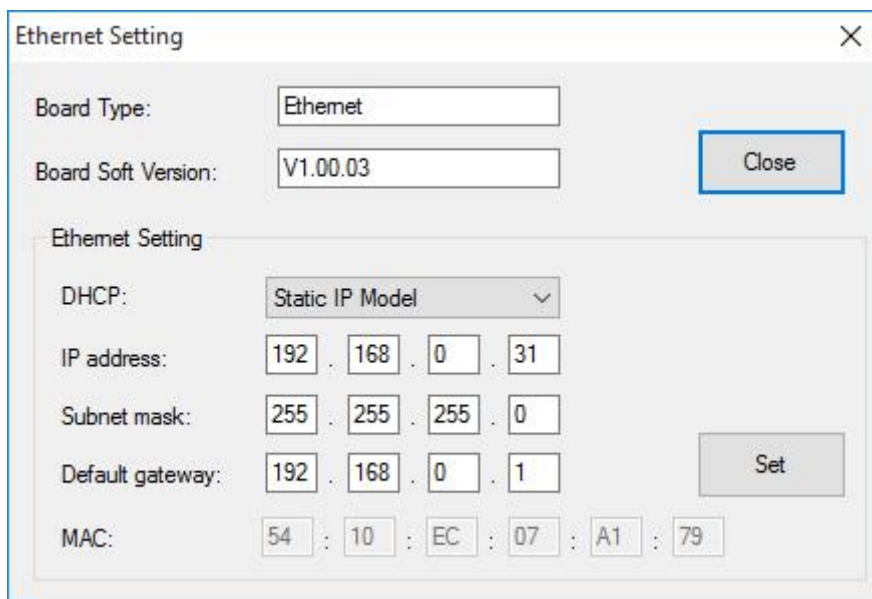
◆ **Set Paper Width**

Choose the item and click “Setting”.



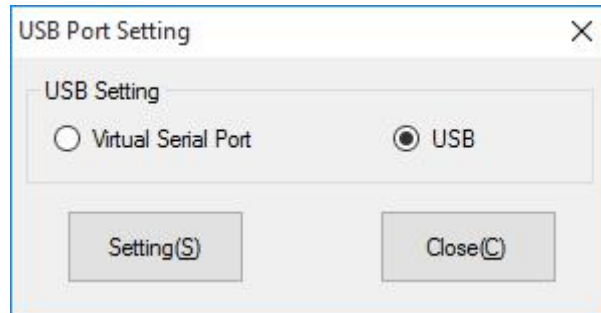
◆ **Ethernet Setting**

Choose the item and click “Set”.



**◆ USB Port Setting**

Choose the item and click “Setting(S)”.

**◆ Restore Factory Setting**

If you want to restore factory settings, please click “Yes”, otherwise click “NO”.

